







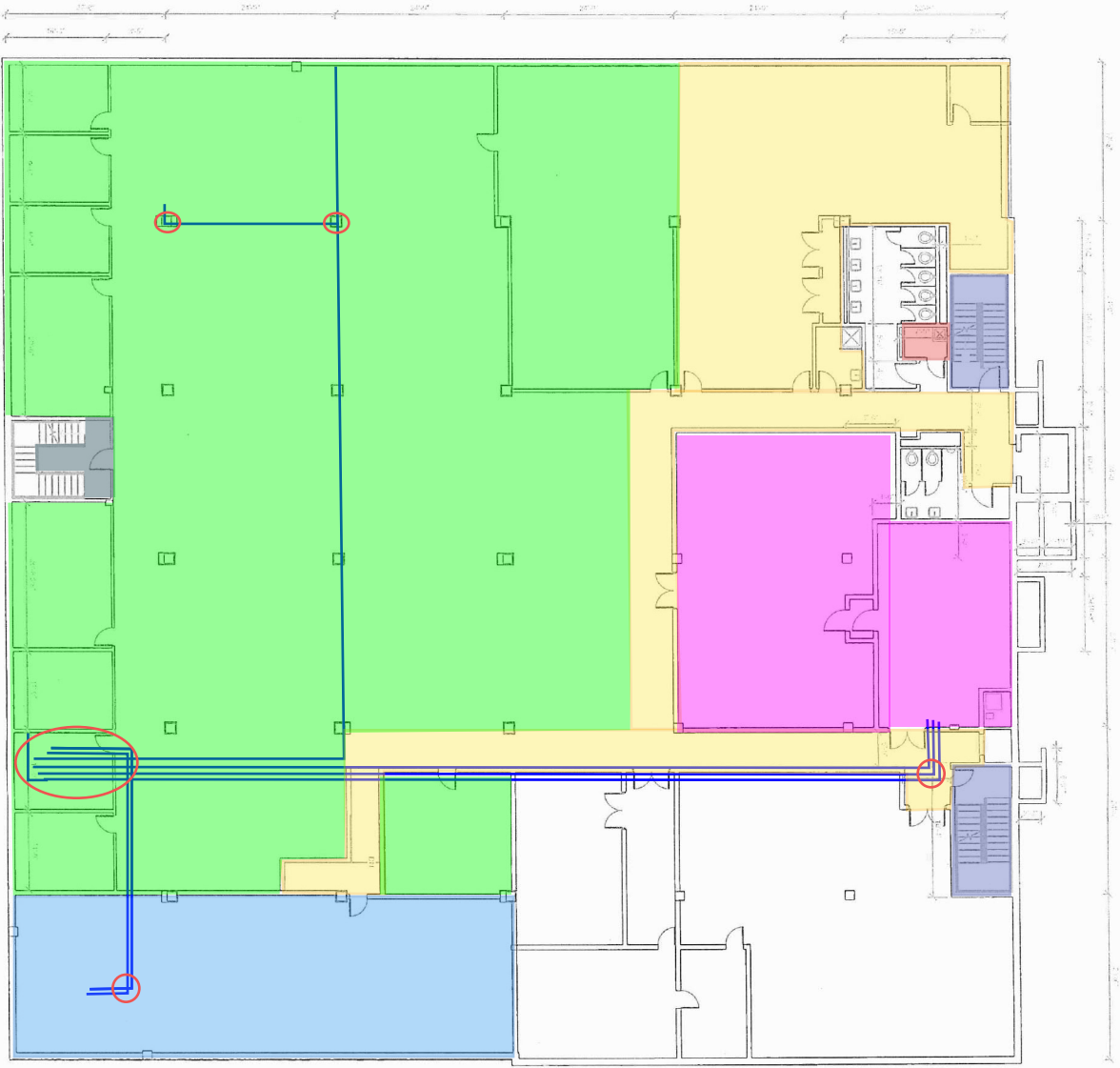


Asbestos Containing Materials

-  Mudded Joint Packings on Non Asbestos Fiberglass Pipe Insulation
-  9" x 9" White with Black Floor Tile and Mastic Beneath Carpet
-  9" x 9" Black with White Floor Tile and Mastic and Black with White Stair Tread
-  Black Mastic Beneath 12" x 12" Yellow Floor Tile
-  Black Mastic Beneath 12" x 12" Grey Floor Tile and 2 x 4 Ceiling Tile - Prindle Swirl
-  Black Mastic Beneath Carpet
-  Black Mastic Beneath Raised Flooring
-  Pipe End Sealant on Non Asbestos Fiberglass Pipe Insulation



NOTE:
 PIPE END SEALANT IS PRESENT IN SCATTERED LOCATIONS ABOVE DROP CEILINGS ON ALL FLOORS.
 ADDITIONAL QUANTITIES OF Mudded JOINT PACKINGS MAY BE PRESENT HIDDEN IN WALLS, COLUMNS, CEILINGS AND VOIDS.

Project Mgr:	ADO
Approved By:	ADO
Checked By:	ADO
Drawn By:	DBM

Project No.	02227162
Scale:	NTS
Date:	05/06/2022
File No.	02227162.DWG



Ferracon
 Consulting Engineers and Scientists
 15620 W 113TH STREET
 PH. (913) 492-7777
 LENEWA, KS 66219
 FAX. (913) 492-7443

ASBESTOS CONTAINING MATERIAL LOCATIONS - BASEMENT
 HOUSING AUTHORITY OF KANSAS CITY, MISSOURI
 3822 SUMMIT STREET
 KANSAS CITY, MISSOURI 64111

Asbestos Containing Materials

-  Mudded Joint Packings on Non Asbestos Fiberglass Pipe Insulation
-  9" x 9" White with Black Floor Tile and Mastic Beneath Carpet
-  9" x 9" Black with White Floor Tile and Mastic and Black with White Stair Tread
-  12" x 12" Black Mastic Beneath 12" x 12" Tan Floor Tile
-  Black Mastic Beneath Carpet
-  Acoustic Plaster



NOTE:
 PIPE END SEALANTS ARE PRESENT IN SCATTERED LOCATIONS ABOVE DROP CEILING ON ALL FLOORS.
 ADDITIONAL QUANTITIES OF Mudded JOINT PACKINGS MAY BE PRESENT HIDDEN IN WALLS, COLUMNS, CEILING AND VOIDS.

Project Mgr:	ADO
Approved By:	ADO
Checked By:	ADO
Drawn By:	DBM

Project No.	02227162
Scale:	NTS
Date:	05/06/2022
File No.	02227162.DWG

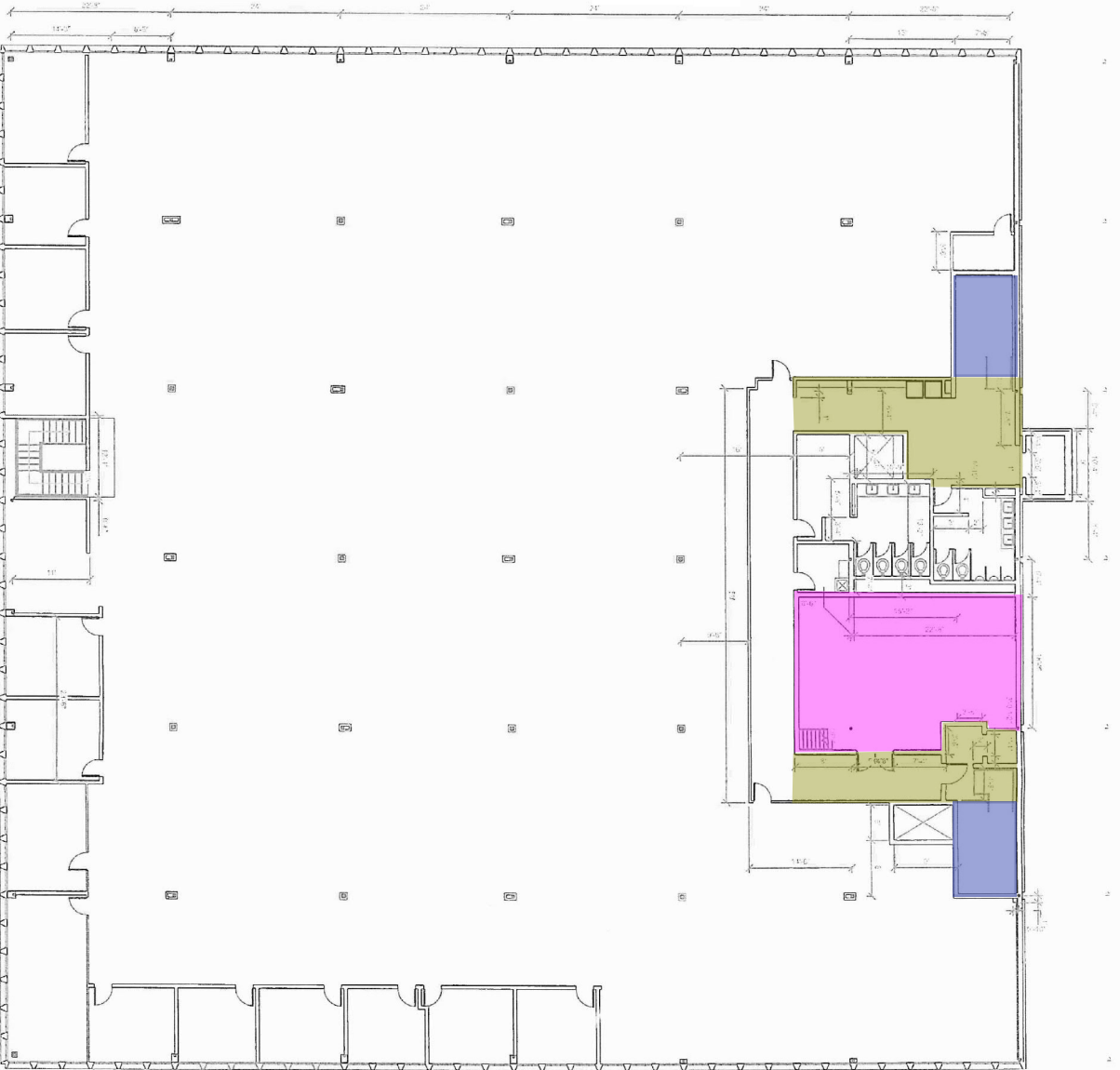


Ferracon
 Consulting Engineers and Scientists
 15620 W 113TH STREET
 PH. (913) 492-7777
 LENEWA, KS 66219
 FAX. (913) 492-7443

ASBESTOS CONTAINING MATERIAL LOCATIONS - 1ST FLOOR
 HOUSING AUTHORITY OF KANSAS CITY, MISSOURI
 3822 SUMMIT STREET
 KANSAS CITY, MISSOURI 64111

Asbestos Containing Materials

- 9" x 9" Black with White Floor Tile and Mastic and Black with White Stair Tread
- 12" x 12" Yellow Spottches Floor Tile and 12" x 12" Green Spottches Floor Tile and Mastic
- Pipe End Sealant on Non Asbestos Fiberglass Pipe Insulation



NOTE:

PIPE END SEALANT IS PRESENT IN SCATTERED LOCATIONS ABOVE DROP CEILING ON ALL FLOORS.
 APPROXIMATE QUANTITIES OF NUMBERED JOINT PACKINGS MAY BE PRESENT THROUGHOUT WALLS, COLUMNS, CEILING'S AND VOIDS.

Project Mgr:	ADO
Approved By:	ADO
Checked By:	ADO
Drawn By:	DBM

Project No.	02227162
Scale:	NTS
Date:	05/06/2022
File No.	02227162.DWG


Ferracon
 Consulting Engineers and Scientists
 15620 W 113TH STREET
 PH. (913) 492-7777
 LEWEXA, KS 66219
 FAX. (913) 492-7443

ASBESTOS CONTAINING MATERIAL LOCATIONS - 2ND FLOOR
 HOUSING AUTHORITY OF KANSAS CITY, MISSOURI
 3822 SUMMIT STREET
 KANSAS CITY, MISSOURI 64111

EXHIBIT
3